



LANDMARK

RESIDENTIAL



Connaught Road, Ilford, IG1 1QN

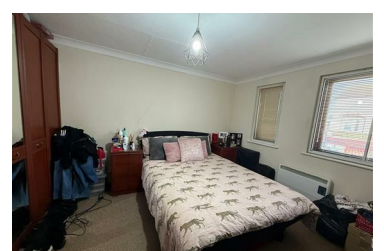
£1,700



This well-presented two bedroom, one bathroom flat is ideally located in the popular IG1 area, offering convenient access to local amenities and transport links.

The property benefits from secure gated parking, providing added security and convenience. Internally, the flat offers a bright and spacious living area, a fitted kitchen, two well-proportioned bedrooms, and a modern bathroom.

Located within walking distance of local shops and the station, this property is ideal for professionals or a small family looking for comfort and excellent connectivity.



18th Floor, 40 Bank Street, London, E14 5NR

Tel: 0203 195 7610 Email: info@landmarkresidential.co.uk <https://www.landmarkresidential.co.uk>